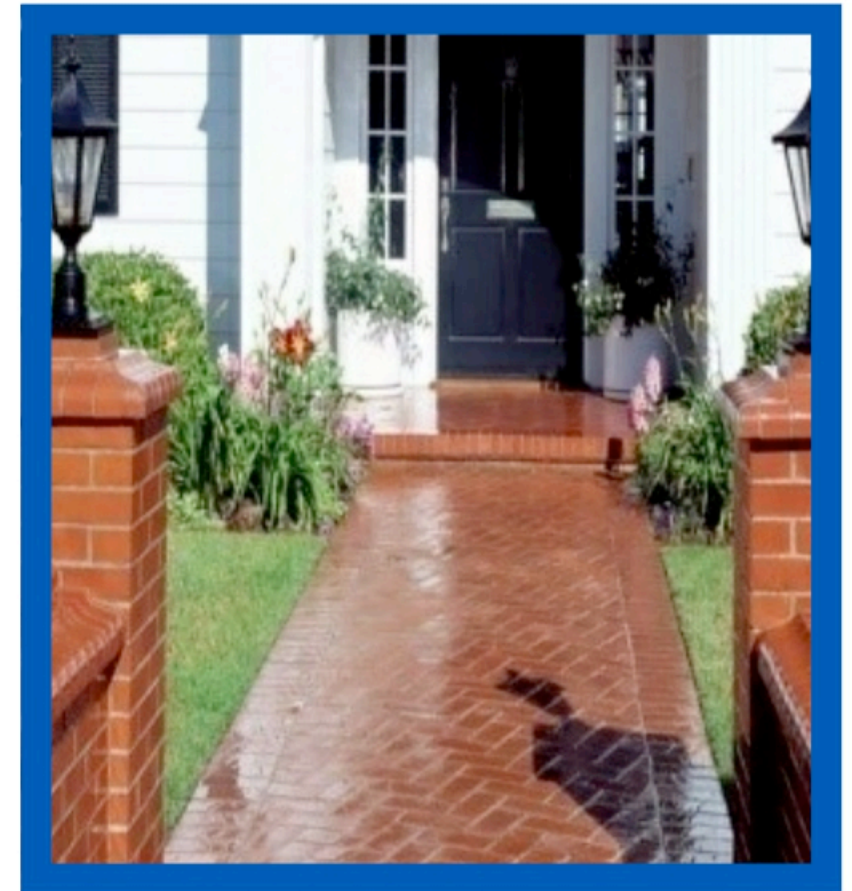
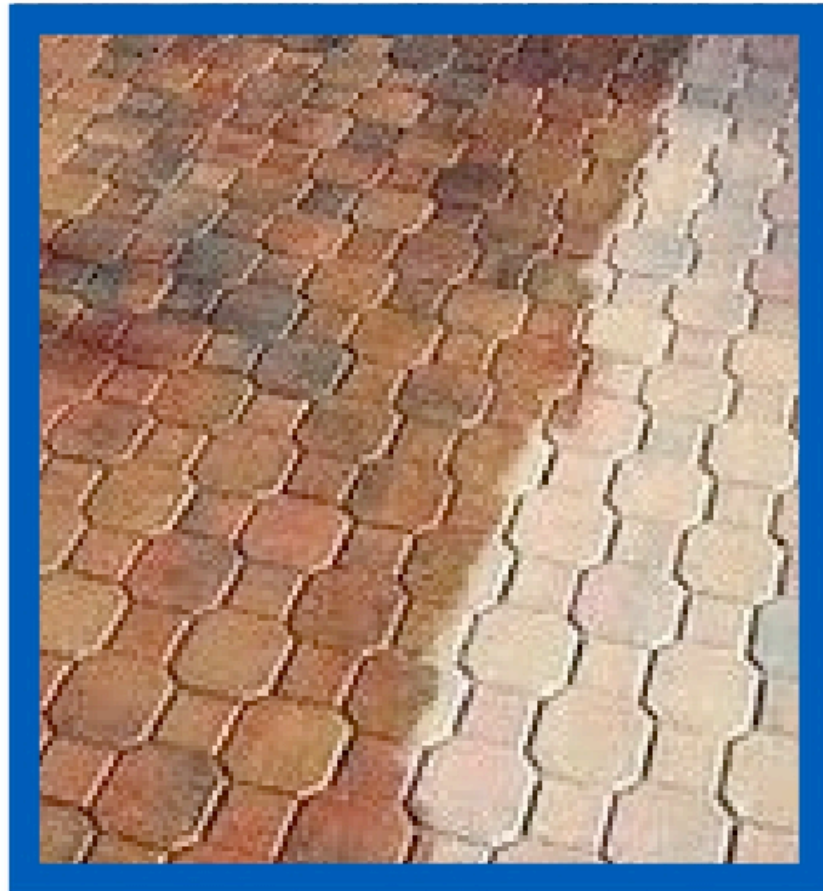


# NTA WLS (WET LOOK SEALER)



NTA wet look sealer is a single component water thinnable polymeric liquid for sealing porosity of Sand Stone, Bricks, Kota Stone, Slate, Dholpu Stone, Textured Paint, Cement Paints and other porous surfaces with excellent wet look finish.

Advantage:



- Gloss wet look finish of the surface.
- Easy to apply (by brush or roller).
- Transparent after applying (No effect on the natural colour of stone).
- Seal porosity of the surface.
- Stop water absorption.
- Fast-drying: 10mins (Hard drying 24 hours).

Surface Preparation:

- The surface must be free from dust, coatings, loose particles, fungus, moss, oil etc.
- After surface preparation, pre-wet the surface with water.
- Allow the surface to dry for a minimum of 1 hour.
- Take the material in a clean bucket and mix 10% to 25% water depending on the porous of surface and weather condition, then apply by paintbrush on the prepared surface and apply to dry for 2-3 hours.
- Apply the second coat after 1st coat dries up. Do not add water to the second coat.

## Coverage:

- NTA WLS covers 80-120 sq. feet per Litre in single coat depending upon the surface of the base.

## Appearance:

- NTA Wet look sealer is milky in colour. When applied on the surface it gives a milky white colour on the surface, then gradually milky white colour turns into a clear glossy on the surface. Giving it a very thick protective layer with an amazing glossy finish.

## Storage and Shelf life:

- Store the material in a cool and dry place
- Shelf Life – 12 months

## Packing:

- 1L, 5L, 20L